

Inspired Interfaces Installation Guide

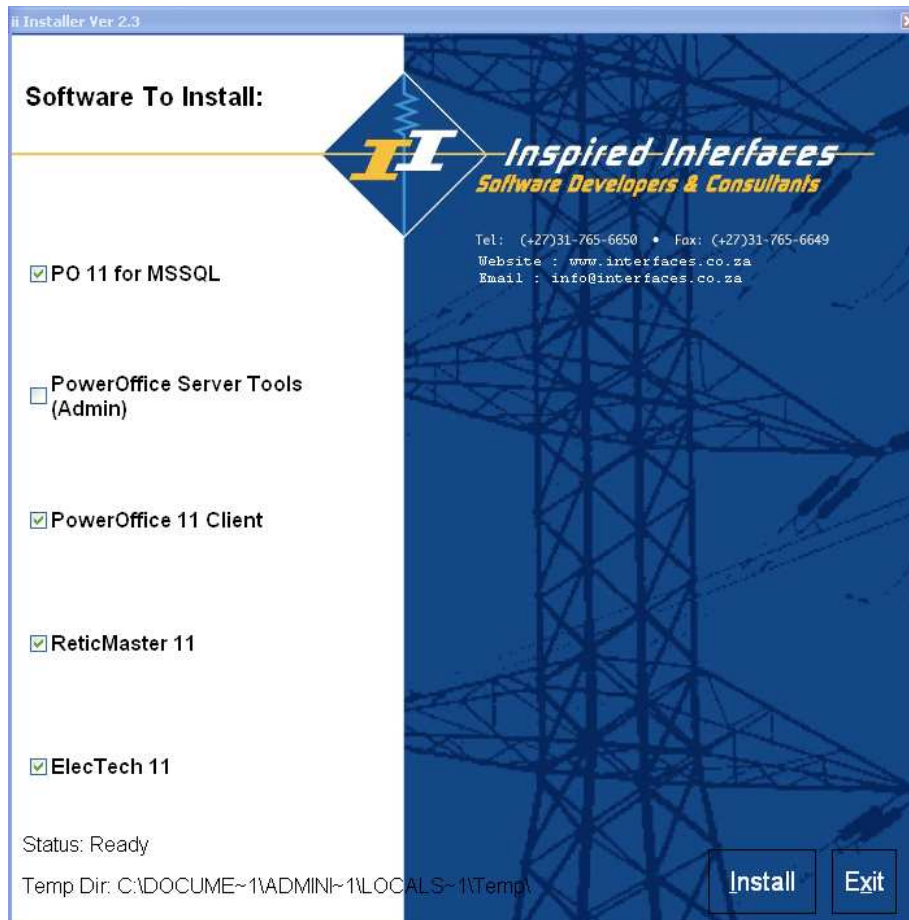
System Requirements

Windows XP	Must have Administration Rights
Windows Vista	Must have Administration Rights and User Account Control switched off.

Installing Software for New Installation

DO NOT INSERT the dongle until all relevant software is installed

When you insert the Inspired Interfaces CD it will automatically open the Installer window.



Before selecting *Install*, choose the appropriate product you want to install.

PO 11 for MSSQL will install a PowerOffice database server onto a PC. This can be installed on a stand alone machine or a dedicated server allowing other machines using PowerOffice to connect. (However, should there be more than 5 users consistently using the system simultaneously a full SQL server should be considered)

PowerOffice Server Tools is used to upgrade an older version of PowerOffice or do maintenance on an existing version.

PowerOffice 11 (Client) ReticMaster 11 and ElecTech 11 are your user applications.

Due to the nature of the software, it is essential that the users using these products attend training. For training enquiries please contact Inspired Interfaces at info@interfaces.co.za

Installing PO 11 for MSSQL

Select an appropriate computer that will act as the Server.

PO 11 for MSSQL must be run on the machine acting as the server.

This computer must have a fixed IP address.

Windows XP	Must have Administration Rights
Windows Vista	Must have Administration Rights and User Account Control switched off.

- Make sure the PO 11 for MSSQL has a tick in it and select **Install**.
- Accept the suggested defaults during installation.
- The PowerOffice 11 Scripiter will automatically run, make sure you have 0 errors at the end of installation.

```

PowerOffice Scripiter 11.1 (Build 514)
File Process Help
2009-09-14 07:53:30 : Connect User "nipower" to MSSQL Server "[local]\nipower", DB "nipower11"
2009-09-14 07:53:30 : Create PowerOffice Schema
2009-09-14 07:53:30 : Add Types
2009-09-14 07:53:30 : Create Tables
2009-09-14 07:53:30 : Create Pack System Tables
2009-09-14 07:53:30 : Create Proj System Tables
2009-09-14 07:53:30 : Create Filter System Tables
2009-09-14 07:53:30 : Create Excel System Tables
2009-09-14 07:53:30 : Create Exchange System Tables
2009-09-14 07:53:30 : Create Rights and License Tables
2009-09-14 07:53:30 : Create DX System Tables
2009-09-14 07:53:31 : Create Other System Tables
2009-09-14 07:53:31 : Create Unique Indexes
2009-09-14 07:53:31 : Create Alternate Indexes
2009-09-14 07:53:31 : Add Defaults and Constraints
2009-09-14 07:53:31 : Add Foreign Keys
2009-09-14 07:53:32 : Add Checks
2009-09-14 07:53:32 : Check Constraints
2009-09-14 07:53:32 : Create Functions
2009-09-14 07:53:32 : Create Views
2009-09-14 07:53:33 : Create Procedures
2009-09-14 07:53:33 : Create Procedures for Insert
2009-09-14 07:53:33 : Create Procedures for Update & Edit
2009-09-14 07:53:34 : Create Procedures for Delete
2009-09-14 07:53:37 : Create Procedures for Select & Expand
2009-09-14 07:53:37 : Create Procedures for Filter System
2009-09-14 07:53:38 : Create Procedures for Rights and Security System
2009-09-14 07:53:38 : Create Procedures for Data Exchange System
2009-09-14 07:53:39 : Create Procedures for Excel System
2009-09-14 07:53:40 : Create Procedures for Reporting System
2009-09-14 07:53:40 : Create Procedures for Copy
2009-09-14 07:53:40 : Create Procedures for Drawing System
2009-09-14 07:53:40 : Create Other Procedures
2009-09-14 07:53:40 : Add Master Data
2009-09-14 07:53:42 : Set Build
2009-09-14 07:53:42 : Done
2009-09-14 07:53:42 : Processed 993 Command(s) in "C:\Program Files\Inspired Interfaces\PO Server\PO MSSQL - Full Build 1108 onto New Server.iic", Errors = 0
=====
END
=====
Ready Idle
    
```

PowerOffice 11 Client

- Make sure the relevant check box is ticked. **Remove ticks for software not wanting to install.**
- Select **Install**.
- Accept the suggested defaults during installation.
- Once the software is installed. Insert your II Dongle then go to Windows **Start\ All Programs** menu, **Inspired Interfaces**, opening the PowerOffice Login window.

PowerOffice Login

Inspired Interfaces
Software Developers & Consultants

PowerOffice 11
Version 11.1 (Build 478)
Copyright © 2003-2009, Inspired Interfaces Ltd.
www.interfaces.co.za

Login Name:

Password:

Microsoft SQL Server
 Oracle

MSSQL

Server Name:

Instance:

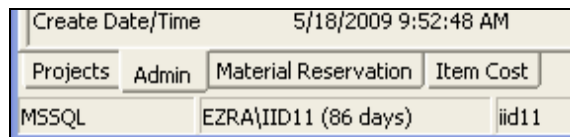
Database:

OK Cancel

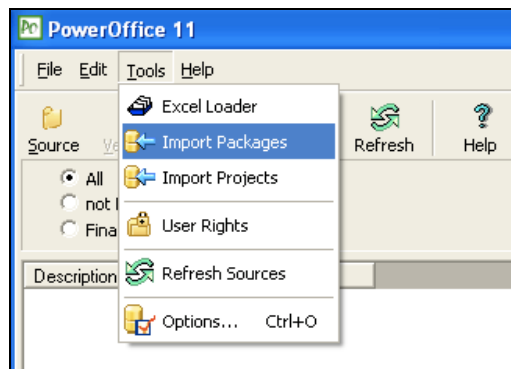
- Fill in the required info. For a first time installation:
 - Login Name: admin.
 - Password: Leave blank
 - Server name
If you have installed II PO 11 for MSSQL on the same machine this will be filled in automatically.
If connecting to another server fill in that server name.
 - Instance IIPower
 - Database IIPower11
- Select **I Agree** which will open PowerOffice11 requiring a first time unlock.
- Select **Help** in the menu tab, **Registration** opening the Registration window.



- Select the relevant license radio button for your license.
- Send through the serial number to info@interfaces.co.za for an unlock code.
- Once a unlock code is received, select **Unlock**, insert the unlock code and then select **OK**.
- PowerOffice 11 will now be unlocked
- Selecting the **Admin Tab** at the bottom of PowerOffice 11 window you will notice that there is no data.

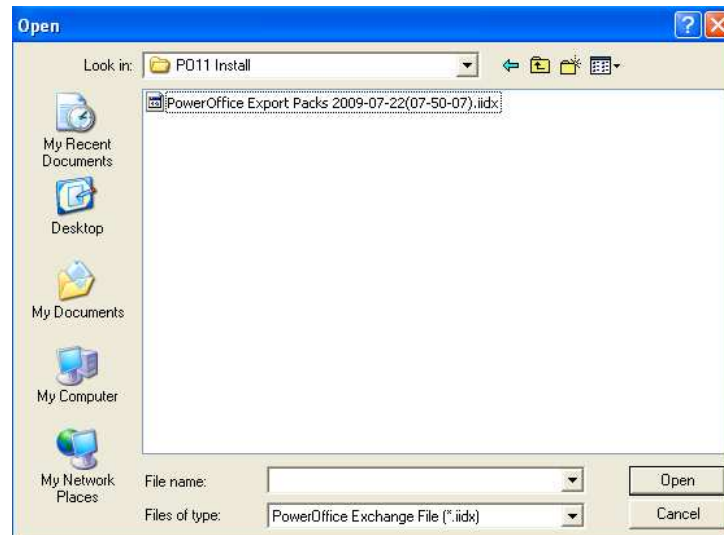


- In PowerOffice 11, **Tools** select **Import Packages**



- In the Open window look in the Inspired Interfaces Installer CD\Install\PowerOffice Server Tools.

- The file PowerOffice Export Packs 2009-07-22(07-50-007).idx should be displayed



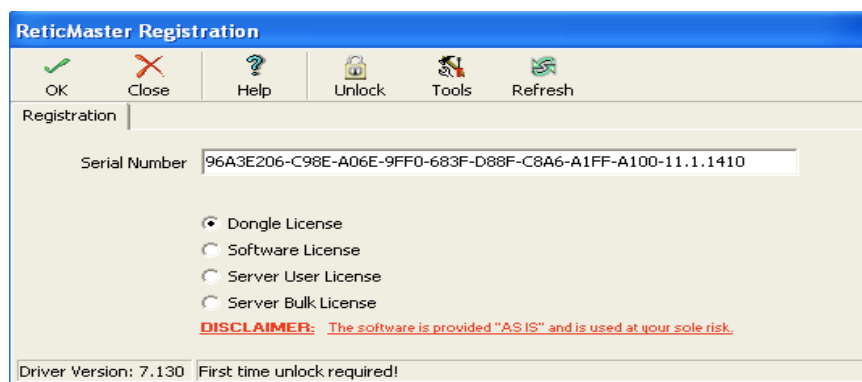
- Opening this file will import the data into PowerOffice.
- When the application has finished running make sure you did not get any errors.
- In PowerOffice select **Refresh** and data will appear.
- Double click on the **Source**, right click on the **Version** and left click on **Finalize Version**
- PowerOffice is ready to be used.

ReticMaster 11 & ElecTech 11

- Make sure the relevant check boxes are ticked. **Remove ticks for software not being installed.**
- Select Install.
- Accept the suggested defaults during installation.
- Once software is installed insert your II Dongle then go to Windows Start/ All Programs menu, Inspired Interfaces. A ReticMaster/ ElecTech Demo window will open.



- Selecting ***I Agree*** will take you into the software chosen, requiring a first time unlock.
- Select ***Help*** in the menu tab, ***Registration*** will open the Registration window.



- Select the relevant license radio button for your license.
- Send through the serial number to info@interfaces.co.za for a unlock code.
- Once a unlock code is received, select Unlock, insert the unlock code and then select ***OK***
- Your software is now ready to be used.